

# Leveling Caster Operation Manual

## MODEL : LEVELING CASTER

- I Thank you for your purchase of G-Dok Leveling Caster.
- I Please read the Operation Manual prior to the use of caster for safety of user and correct use.
- I Please contact [Boompro](http://boompro.com). for further questions to receive earnest response.

## Table of Content

1. Caution & Request for Safety
2. Description of Each Section
3. Installation & Operation
4. How to inspect
5. Warranty & Post Sales Service

Boompro Trade Development Co.,Ltd

Tel: (+8621) 6142 1314

Fax: (+8621) 6142 1413

E mail : [sales@boompro.com](mailto:sales@boompro.com)

---




## 1. Caution & Request for Safety

※Please make sure to read the Operation Manual prior to the use of caster for safety of user and correct use.

※Please make sure to comply with the Cautions described below as they contain the critical content on Safety.

**Use the Leveling Caster for short distance transporting & fixing the equipments or apparatus. Using of this caster other than the above purpose may cause unexpected accidents.**

### ※Mark & Definition

|  |   |
|--|---|
|  <b>DANGER</b>  | Indicating dangerous situation which is critical for safety as incorrect use may inflict the personal death or serious injury.                  |
|  <b>WARNING</b> | Indicating dangerous situation which is critical for safety as incorrect use may inflict the personal death, serious injury or property damage. |
|  <b>CAUTION</b> | Indicating dangerous situation as incorrect use may inflict the light personal injury or property damage.                                       |

※ **Caution Not Marked on Product**

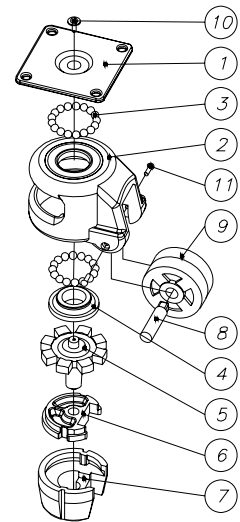
In the event the weight of equipment exceeds the recommended load per 4 casters, it will not withstand the heavier weighted loads as the load is to be concentrated on two casters, even though the casters more than four sets would be installed.

 **WARNING**

Never place loads heavier than the recommended load per 4 casters, as the casters may be damaged in the event the weight of equipment exceeds the recommended load per 4 casters.

**2. Description of Each Section**

| No. | Component Name | No. | Component Name | No. | Component Name |
|-----|----------------|-----|----------------|-----|----------------|
| 1   | TOP PLATE      | 5   | HANDLE         | 9   | WHEEL          |
| 2   | FRAME          | 6   | DISH           | 10  | BOLT           |
| 3   | BALL           | 7   | PAD            | 11  | BOLT           |
| 4   | RING NUT       | 8   | SHAFT          |     |                |



**3. Installation & Operation**

**3.1. Caster Selection & Installation**

- Select a model within the range of recommended load per 4 casters of product not exceeding the maximum loads of equipments or apparatus.
- Once the product model is selected, manufacture the hole distance, hole size, tap & others of Top Plate & Equipment Plate of selected model either identical or mountable.
- Tightly fasten the plates of both faces with bolts & nuts supplied with the product, not to have any gaps.

 **CAUTION**

**3.2. How to use**

- Following instruction must be complied when using the product, a multi-function, multi-purpose caster capable of moving & fixing of position. Failure in compliance of following instruction may cause the damage on caster, physical loss of equipment or personal injuries.
- When moving the equipment, the moving should be made with a speed less than 1km/h and short distances as per the characteristic of product, either moving by lifting the casters on the area with different floor height or grooves, or moving slowly not to inflict impact on the casters.
- When adjusting the height & moving together, move that the No. 7 Pad is up from the

floor by rotating the No. 5 Handle to left direction. When adjusting the height at the fixed position, the clearing height of caster from ground should be as shown on below Table No. 1 by rotating the No. 5 Handle to right direction. Keep on rotating the No. 5 Handle either to left or right directions may cause the damage of bolts & nuts, resulting in the operating failure.

- Moving must be done ensuring the condition of wheels exactly same as above prior to the moving operation. Otherwise, the No. 10 Bolt is to be loosened & separated resulting in the failure of Height Adjustment Function.

| Model                          | GD-40 | GD,N,R-60 | GD,N,R-80 | GD-100 | GD-120 | GD-150 |
|--------------------------------|-------|-----------|-----------|--------|--------|--------|
| Wheel Clearance from the floor | 7mm   | 7mm       | 12mm      | 10mm   | 10mm   | 12mm   |

( Table No. 1 )

- The product operating temperature should be within the range of -10~+90°C, allowing no contact with chemicals and engaging no impact loads.

#### 4. How to inspect

- When using the product for a long period after mounting casters, routinely check the mounting bolts & nuts as they may be loosened. (Inspection Cycle may be varied depending on the usage level of casters.)

#### 5. Warranty & Post Sales Service

- The period of G-Dok Product Warranty is extended to One(1) Year from the date of purchase, providing either the Post Sales Service or replacement with new product at free of charge in the event of defective product due to the erroneous production.